

# BOCCHI

## LIVENZA 2.0

### PULL-DOWN KITCHEN FAUCET



#### Product Code

2020 0001 XX

#### FEATURES:

- 35 mm ceramic disc valve cartridge
- Cartridge working life: >500,000 times
- Lead-Free faucet body, contains  $\leq 0.25\%$  total lead content by weighted volume
- Maximum flow rate = 1.8 gpm (6.8 l/min) at 72 psi
- Spout swivels 360°
- Standard or Needle Spray with flexible, weighted gooseneck shower hose
- 90° forward handle
- Includes flexible inlet hoses, each 24"
- Stabilizer flange included
- Extended 3.5 in shank

**WEIGHT:** 3.5 lbs

#### AVAILABLE FINISHES:

- CH - Chrome
- SS - Stainless Steel
- MB - Matte Black

#### DIMENSIONS:

Spout length = 9.5 in (242 mm)  
Spout height = 7.7 in (195.4 mm)  
Overall Faucet height = 23.9 in (608 mm)

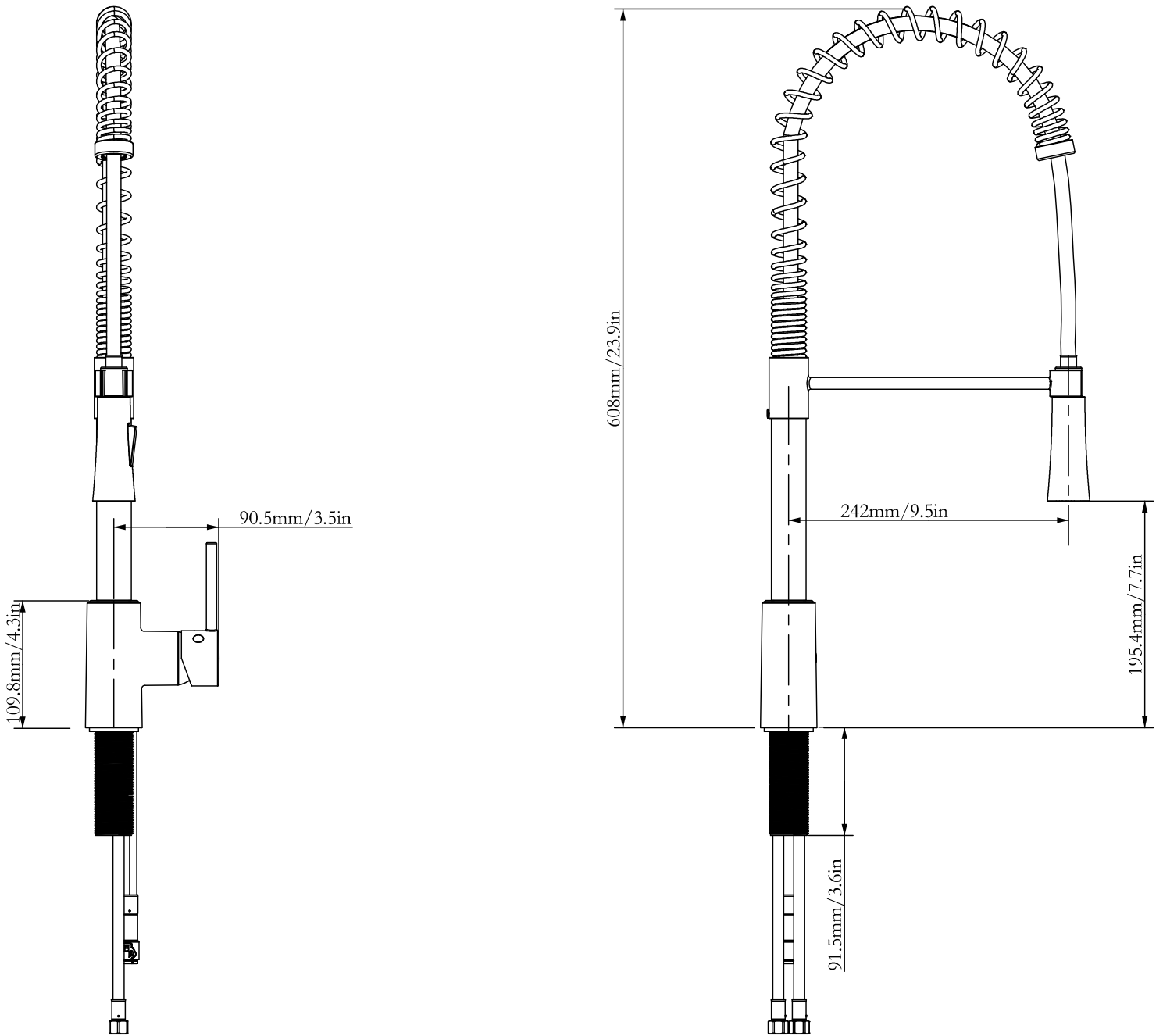
#### OPTIONAL ACCESSORIES:

- 2180 0003 - Contemporary Deck Plate
- 2180 0004 - Traditional Deck Plate
- 2340 0005 - Lesina Soap Dispenser
- 2340 0006 - Tronto 2.0 Soap Dispenser

#### CODES / STANDARDS:

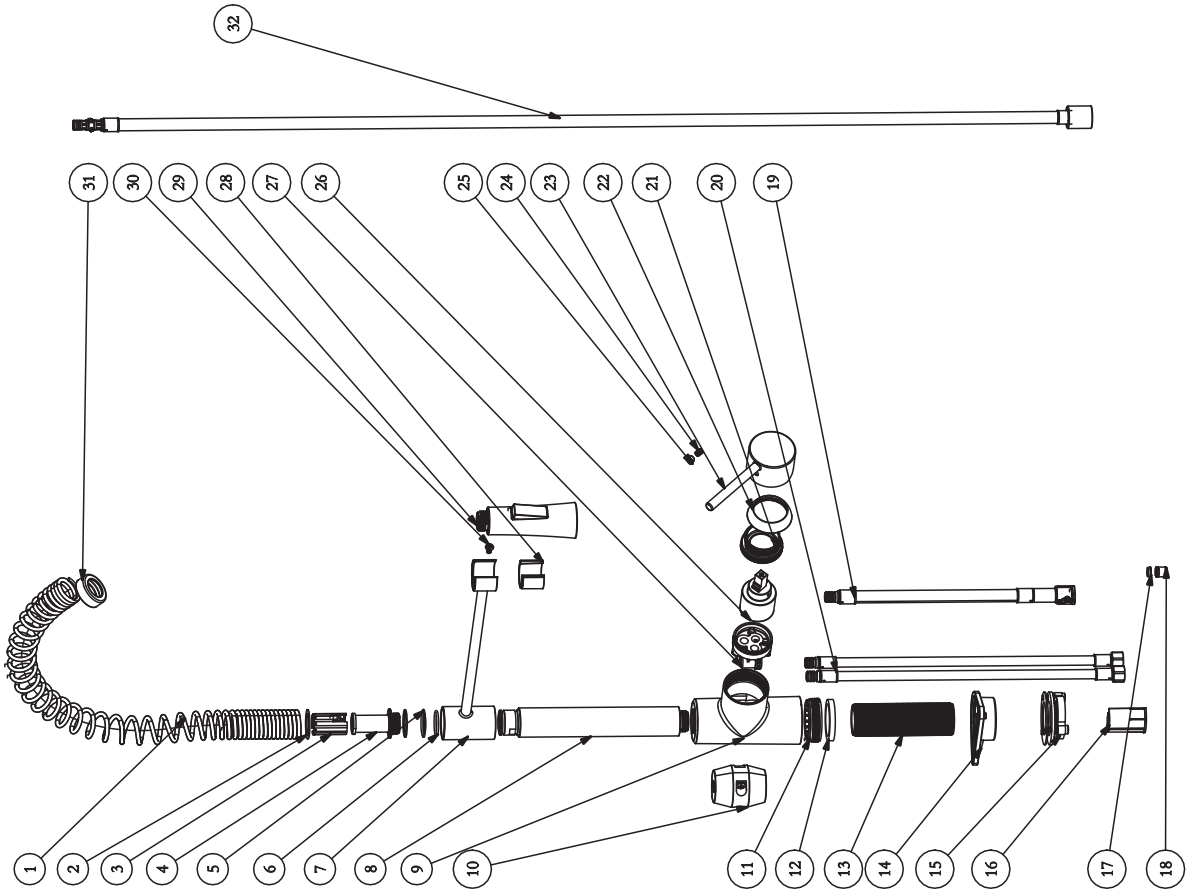
ASME A112.18.1 / CSA B125.1 / NSF 61 / NSF 372 / AB1954 / DOE - Energy Policy Act 1992 / CEC - California Energy Consumption / Meets CalGreen requirements for kitchen faucets

# BOCCHI<sup>®</sup>



**IMPORTANT:** These measurements are subject to change or cancellation. No responsibility is assumed for use of superseded or voided pages. BOCCHI reserves the right to make revisions without notice to product specifications.

# BOCCHI



NO.	DWG. NO.	NAME	MATERIAL	QTY
32	999910061207	Pull-down Hose Assembly	TPE+PE-RT+PA	1
31	121010211041	Ring	H57	1
30	C4K7X01M	Screw	SUS304	1
29	121010491032	Sprayer	ABS757	1
28	121010491032	C-ring	POM_WK2001	1
27	121010211011	Cartridge Seat	PPA+50%GF	1
26	F35ZT_6X01	Cartridge Assembly	POM	1
25	999910101773	Red and Blue Cap	SIL	1
24	C5XEX03M	Screw	SUS302	1
23	121011431011	Handle	Zinc Alloy	1
22	999910101852	Decorative Cover	ABS757	1
21	121010281016	Nut	HP657-3	1
20	999910060483	Inlet Hose Assembly	SUS304+PVC	2
19	999910061139	Outlet Hose Assembly	TPE+PVC	1
18	N10X10_5X01	Check Valve	POM	1
17	121010481019	Flow Regulator	POM	1
16	121010481009	Gasket	POM/M90	1
15	121010221021	Accessories bag	Aluminium Alloy	1
14	113110411013	Stabilizer gasket	POM_CF2001	1
13	121010481008	Mounting threaded pipe	Aluminium Alloy	1
12	121010281001	Washer	EVA	1
11	121010211001	Nut	PA66+30%GF	1
10	999910101762	weight	Iron	1
9	121010221048	Body	Zinc Alloy	1
8	121010211050	Connecting pipe	SUS304	1
7	121011431006	Stents	Zinc Alloy	1
6	R2ZXX01	O-ring	NBR_70°	2
5	121110131011	Washer	POM	2
4	121010211008	Spindle	Aluminium Alloy	1
3	121010281004	Gasket	POM	1
2	121010211004	Washer	PTFE/白	1
1	999910041103	Spring	SUS304	1

**IMPORTANT:** These measurements are subject to change or cancellation. No responsibility is assumed for use of superseded or voided pages. BOCCHI reserves the right to make revisions without notice to product specifications.